

PLAT OF SWANK 2ND. ADDITION

SHOWING LOTS BELONGING TO EMMETT SWANK
IN THE SOUTHEAST CORNER OF MILITARY LOT 12
ALONG SENECA LAKE IN RICHLAND TWP.
GUERNSEY COUNTY OHIO

N
SCALE
50' = 1" IN.

I HEREBY CERTIFY THE MEASUREMENTS HERE SHOWN
ARE, AS THEY ARE STAKED ON THE GROUND
SAM PATTON # 8122

FILED CO. AUDITORS OFFICE
JULY 7, 1948
WILLARD PATTON
AUDITOR

APPROVED JULY 27-1948
WITH UNDERSTANDING OWNER OR
OWNERS FURNISH DRAINAGE STRUCTURES
& MAKE ORIGINAL GRADE OF STREETS
& ALLEYS

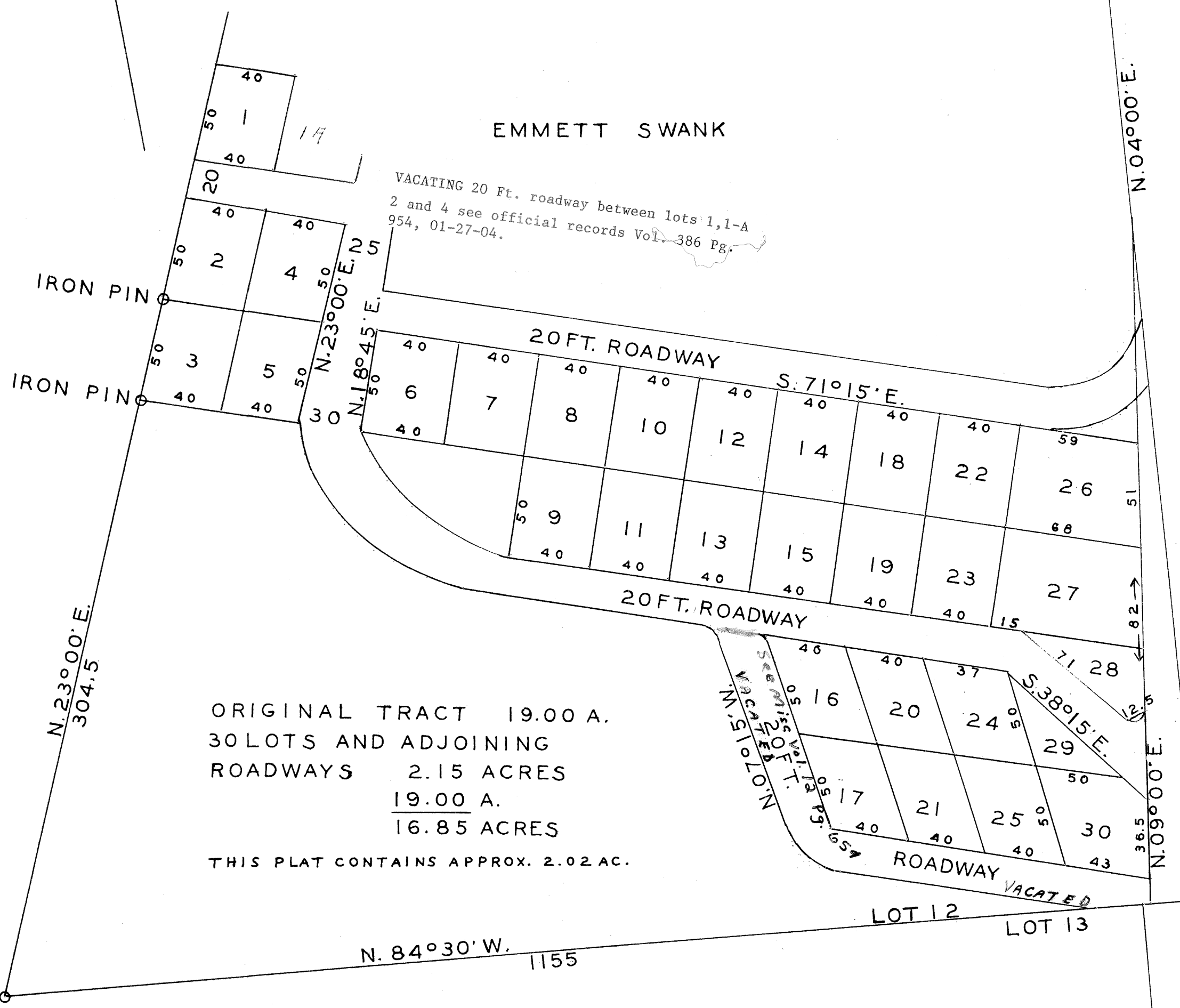
JOURNAL P- PAGE 101
GUERNSEY CO. COMM.
WILLARD PATTON
CLERK

TRANSFERRED JULY 28-1948
WILLARD PATTON
AUDITOR
FEE \$1.50 PAID

29588

FILED JULY 29 1948 AT 9:30 A.M.
RECORDED AUGUST 31 1948
VOL. 10 PAGE 31
ERNEST W. GREGG, RECORDER
GUERNSEY COUNTY, OHIO
FEE \$ 5.50 PD.

MUSKINGUM WATERSHED CONSERVANCY DISTRICT



EMMETT SWANK

VACATING 20 Ft. roadway between lots 1, 1-A
2 and 4 see official records Vol. 386 Pg.
954, 01-27-04.

ORIGINAL TRACT 19.00 A.
30 LOTS AND ADJOINING
ROADWAYS 2.15 ACRES
19.00 A.
16.85 ACRES

THIS PLAT CONTAINS APPROX. 2.02 AC.

STATE ROUTE 313

P.T. MORRIS GEO.W. CHAS.W. & WM.L. CALE

S.W. CORNER LOT 5
N.W. CORNER LOT 4
EMMETT SWANK